

téléo

Story of a success **THE URBAN CABLE CAR IN TOULOUSE!**

ONCOPOLE
LISE ENJALBERT

HÔPITAL
RANGUEIL
LOUIS LARENG

UNIVERSITÉ PAUL
SABATIER



Projet cofinancé par le Fonds Européen de Développement Régional

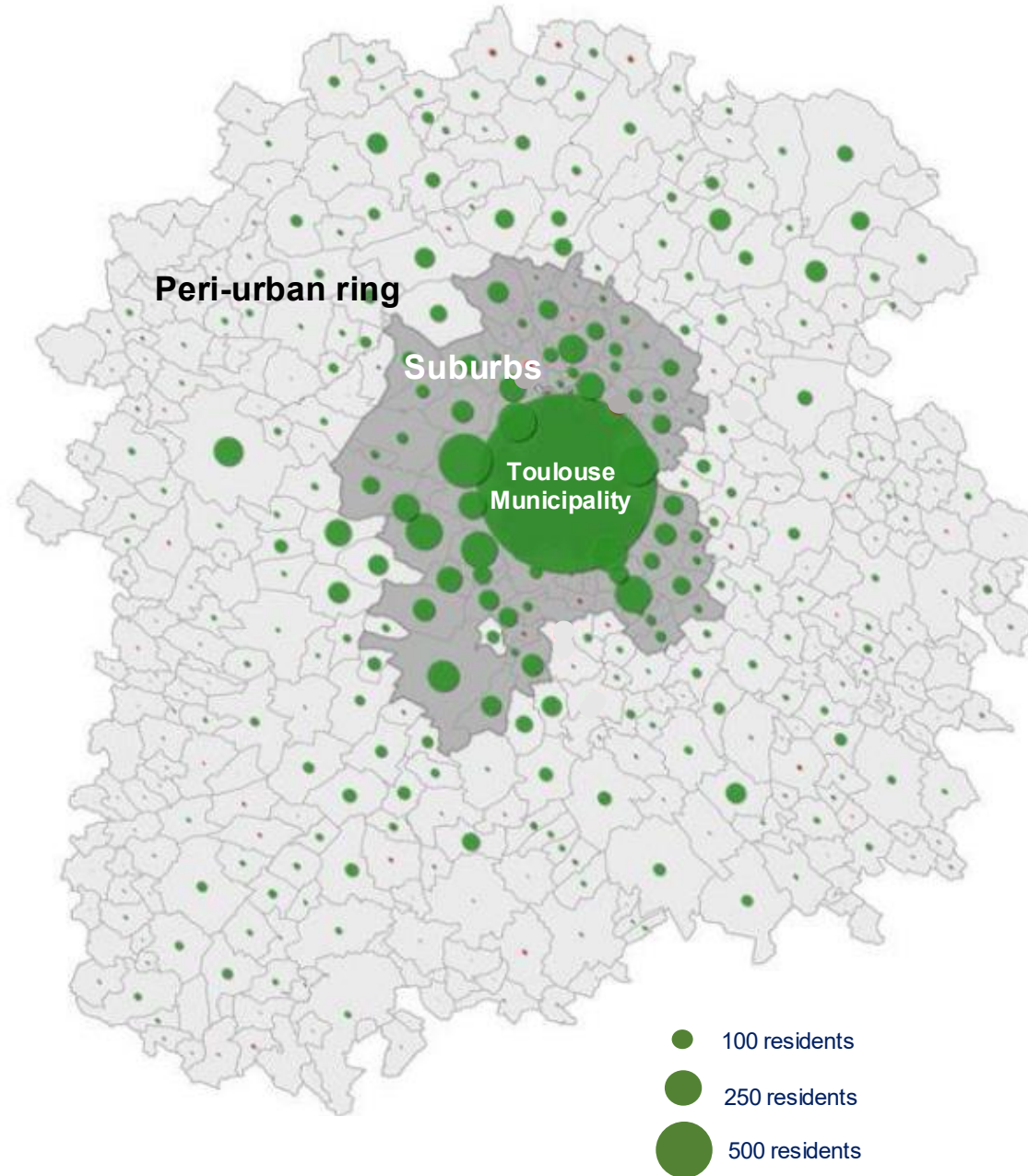


Téléo, a solution to the territory's attractiveness

A strong demographic, economic and urban growth

Téléo, an environmentally-friendly solution

30 times less polluting than cars



120 MUNICIPALITIES

1 MILLION RESIDENTS



+ 15,000 RESIDENTS / YEAR

+ 7,000 JOBS / YEAR

IN TEN YEARS? 500,000
ADDITIONAL TRAVELS
EVERY DAY



A structuring project for the South of Greater Toulouse

Travel needs in that area have been estimated at 7,000 passengers every day.

Mobility Project 2020 - 2025 - 2030



Watch the Téléo Project film:

<https://www.youtube.com/watch?v=lgLxSdYvbqg>





A project improving the service of large facilities in the South of the Metropolis

Oncopole (Cancer Hospital, industries and research, Sanofi, Pierre Fabre, Evotec...): 10,000 jobs

**Hôpital Rangueil:
5,000 jobs, 200,000 medical consultations every year**

**Université Paul Sabatier:
30,000 students**



ONCOPOLE
LISE ENJALBERT

HÔPITAL
RANGUEIL
LOUIS LARENG

UNIVERSITÉ PAUL
SABATIER

WITH TÉLÉO, TOULOUSE PUBLIC TRANSPORTS ARE REACHING FOR THE SKY!



The Téléo cable car will offer a breathtaking view over the Pyrenean chain!

© Tisséo Ingénierie - Airimage

A specific topography which means cable car is the only suitable and efficient means of transport

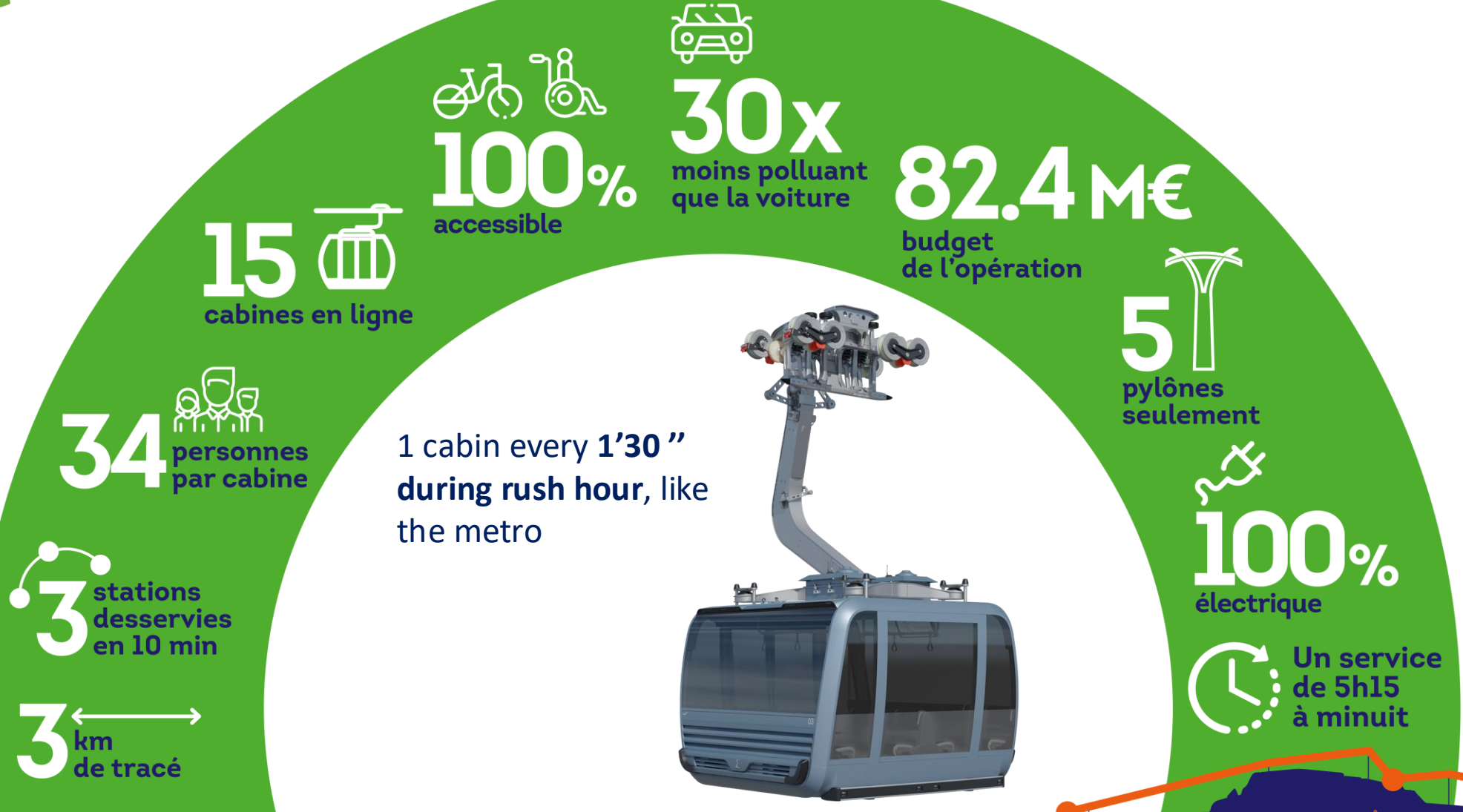
- › Crossing the Garonne and natural barriers
- › Preserving the natural area
- › Direct route
- › 100% exclusive-lane means of transport



3S TECHNOLOGY, AN EFFICIENT TECHNICAL SOLUTION

With 3 cables (two carrying cables and one hauling cable), the system combines performance and comfort for both passengers and residents.

- › Low footprint on the ground with only 5 pylons (compared to 20 usually) for a discreet landscape integration
- › Better cabin stability and reduced vibrations
- › Frequency and speed can be adapted in real time
- › Reduced noise impact





Project timeline



over 16,000 hours of work by staff on
inclusion programmes (study and works) at
POMA



téléo



**ONCOPOLE LISE
ENJALBERT
STATION**



POMA Group Urban architects:
SEQUENCES / Pictures: Les Yeux Carrés

ONCOPOLE
LISE ENJALBERT

HÔPITAL
RANGUEIL
LOUIS LARENG

UNIVERSITÉ PAUL
SABATIER



Téléo's Hôpital Rangueil-Louis Lareng station stands on a site with a very steep incline. From this constraint, a breathtaking station was born, with platforms offering passengers an unparalleled panorama over the Pouvourville hillsides...

téléo



**STATION
UNIVERSITÉ
PAUL
SABATIER**

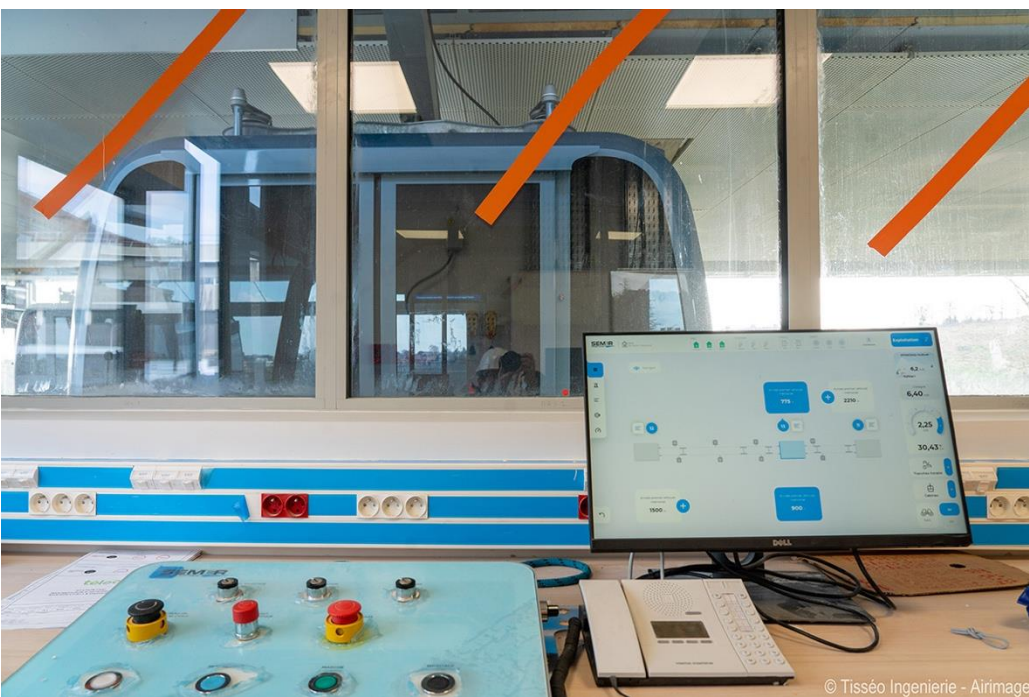


POMA Group Urban architects:
SEQUENCES / Pictures: Les Yeux Carrés

ONCOPOLE
LISE ENJALBERT

HÔPITAL
RANGUEIL
LOUIS LARENG

UNIVERSITÉ PAUL
SABATIER



Téléo's Université Paul Sabatier station is sleek and modern and is the one accommodating the workshops and the main motorisation system.



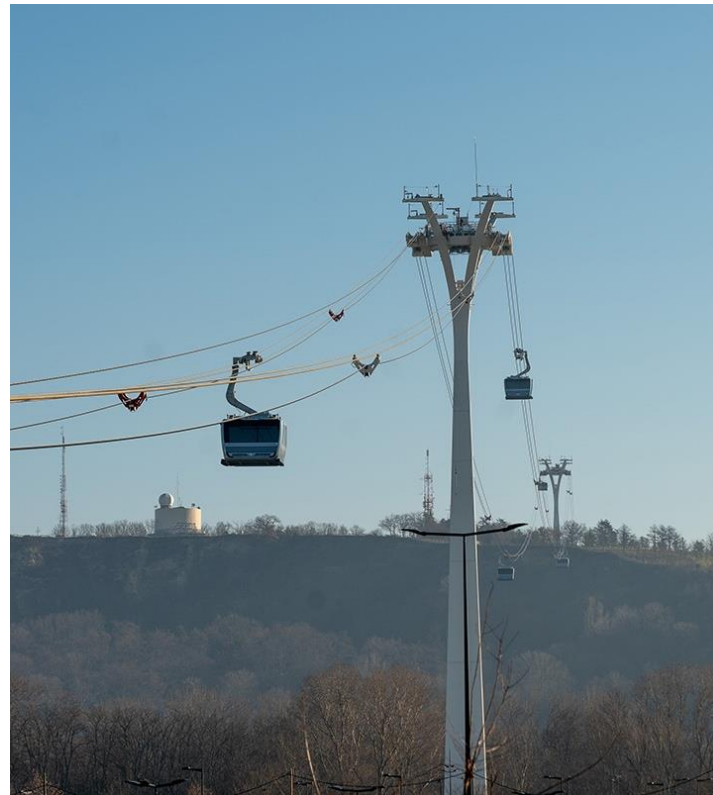
PYLONS



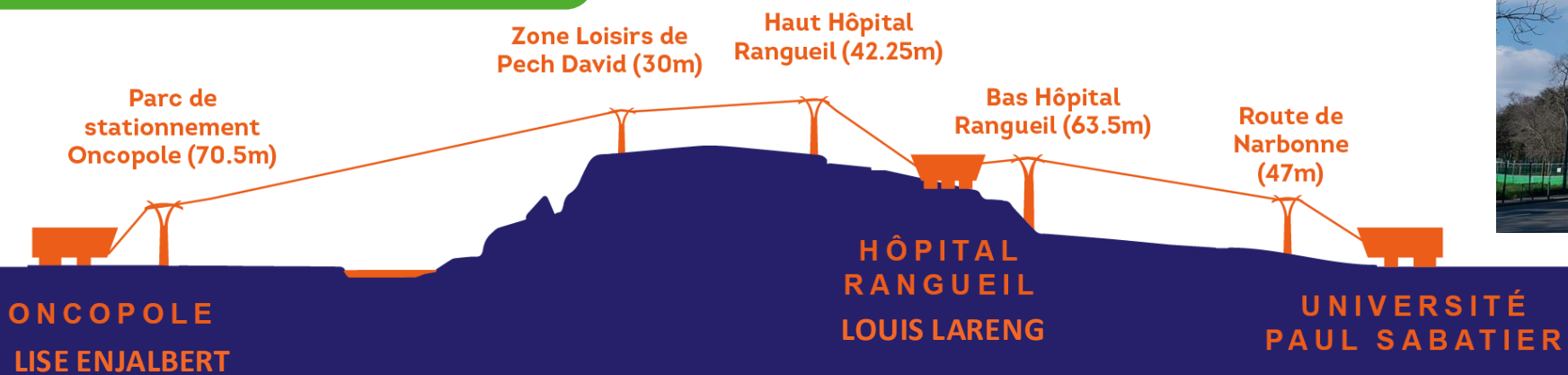
ONCOPOLE

HÔPITAL
RANGUEIL

UNIVERSITÉ PAUL
SABATIER



Watch the pylons being installed:
https://www.youtube.com/watch?v=RywE5hwTlAw&feature=emb_logo



ONLY 5 PYLONS FOR A 3-KM LINE!

THE MAIN LESSONS

- 6 million passengers
- 100% residents of Toulouse love TELEO
- High level of availability and liability
- The same level of quality as the automatic metro
- And on top of that, calm and relaxation!
- Connection to the transport network (metro, buses, parkings) is a key success factor
- More than 50 visits from cities of France and other countries

A LOOK AT THE FUTURE

- Decision taken to extend to the east, and then to the west, studies are beginning.
- Around stations, new buildings, housing, industries, services, Basketball stadium...
- As in Toulouse, other projects in France are relevant and successful, Créteil, Ajaccio, St Denis de la Réunion

AS A CONCLUSION...

- Urban cable car is a very efficient public transport solution
- Recoman of soberness!
- Rather for low-density urban areas
- It's better to be connected with transport network
- The dialog with local residents and politics, is more delicate, but essential, as soon as possible

And I hope than with the exemple of Toulouse and others successful projects, there will be less time between the idea and the political decision to make it!

téléo

**THANK YOU FOR
ATTENTION
AND YOU ARE WELCOME
IN TOULOUSE!!**

ONCOPOLE
LISE ENJALBERT

HÔPITAL
RANGUEIL
LOUIS LARENG

UNIVERSITÉ PAUL
SABATIER



Projet cofinancé par le Fonds Européen de Développement Régional